

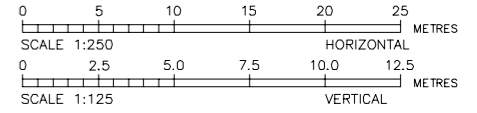
574

PIPE SIZE	DN(2x)1950-RCP RRJ CLASS 4 PIPE		TWIN 1850 x 1450 BOX CULVERTS	
GRADE	0.200%		5.00%	
100yr ARI FLOW (m ³ /s)	6.49 / (6.12)		5.88	
VELOCITY (m/s)	2.60 / (2.61)		2.76	
TRENCH / REINSTATEMENT TYPE (AHD) DATUM	TYPE A2		REFER DRG No. DC0089-100-ST-058	
ENERGY LINE (100yr ARI) (mAHD)	18.88		18.92	
HGL (100yr ARI) (mAHD)	18.52		18.62	
DEPTH TO INVERT	3.56	3.55	3.83	3.91
INVERT LEVEL	16.48	16.50	16.61	16.63
FINISHED SURFACE LEVEL	20.04	20.05	20.44	20.54
EXISTING SURFACE LEVEL	18.62	18.03	17.90	16.83
CHAINAGE	2127.70	2133.70	2188.05	2200.11
			2202.44	2203.67
			2203.67	2214.44
				2214.55

- HYDRAULIC INFORMATION EXTRACTED FROM XP-SWMM MODEL AND IS BASED ON THE 100 YEAR ARI STORM 120 MINUTE DURATION.
- UTILITY PREFIX ARE EXPLAINED AS FOLLOWS:
EX(DBYD) - EXISTING UTILITY FROM DIAL BEFORE YOU DIG
EX(PH) - EXISTING UTILITY CONFIRMED BY POTHOLING
PROP - PROPOSED UTILITY
EPSOM - PROPOSED FUTURE UTILITY SHALL BE CONSTRUCTED BY OTHERS
- THIS DRAWING SHALL BE READ IN CONJUNCTION WITH GENERAL ARRANGEMENT DRG No. DC0089-100-GA-003.
- DEPTH TO INVERT LEVEL CALCULATED FROM FUTURE SURFACE LEVEL.
- FINISHED SURFACE LEVEL SHALL BE CONFIRMED WITH GSTC PRIOR TO CONSTRUCTION.
- REFER TO STRUCTURE DRAWINGS FOR SET-OUT INFORMATION.
- PIPE NOT CONCRETE ENCASED SHALL BE PROVIDED WITH THE FOLLOWING MINIMUM BACKFILL:
DN1800 - 1.2m COVER
DN1950 - 1.5m COVER
- EXISTING LOCAL DRAINAGE CONNECTIONS SHOWN ON PLAN ONLY.
- FOR TRENCH / REINSTATEMENT DETAILS, REFER TO DRG No. DC0089-100-ST-013 & 072.

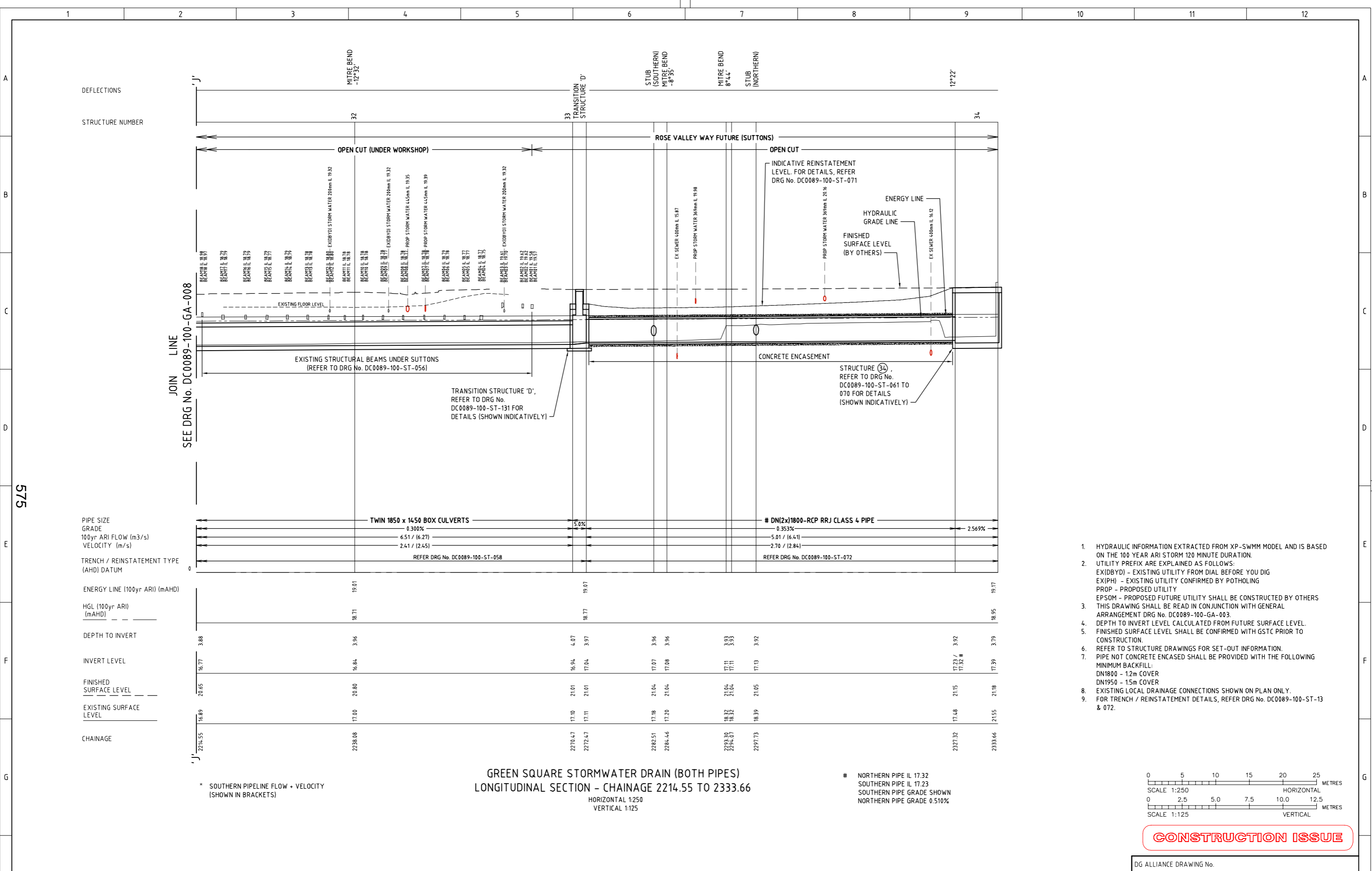
GREEN SQUARE STORMWATER DRAIN (BOTH PIPES)
LONGITUDINAL SECTION - CHAINAGE 2127.70 TO 2214.55
HORIZONTAL 1:250
VERTICAL 1:125

* SOUTHERN PIPELINE FLOW + VELOCITY (SHOWN IN BRACKETS)



CONSTRUCTION ISSUE

		DESIGNED C.SALEM DRYING GREEN ALLIANCE 13/09/17				ACCEPTED T.FLEMING ALLIANCE GENERAL MANAGER DRYING GREEN ALLIANCE 13/09/17	GREEN SQUARE STORMWATER PROJECT CITY OF SYDNEY DRAINAGE SHEAS CREEK AMPLIFICATION SWC89AMP SP1 LAYOUT LS - CH.2127.70 TO 2214.55	DRAWING No. DC0089-100
		DRAWN L.KO DRYING GREEN ALLIANCE 13/09/17	B DRAWING DELETED - REMOVED FROM SCOPE	LK 13/09/17	ACCEPTED P.SHIELDS CIS PROJECT MANAGER CITY OF SYDNEY PROJECT OWNER 13/09/17			GA-007
		VERIFIED D.KENT DRYING GREEN ALLIANCE 13/09/17	A ISSUED FOR CONSTRUCTION	LK 01/04/16			ISSUE SHEET No.	B 300 F 4
		APPROVED I.CHASE DRYING GREEN ALLIANCE 13/09/17	2 90% DETAILED DESIGN REVIEW FOR SP1	LK 19/02/16			PROJ No.	20028450
			1 60% DETAILED DESIGN REVIEW FOR SP1	LK 08/12/15			DRAWING STATUS:	DRAWING DELETED
			LETTER	DETAILS OF AMENDMENT	APP'D	DATE		

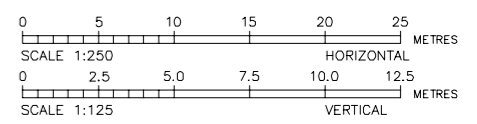


**GREEN SQUARE STORMWATER DRAIN (BOTH PIPES)
LONGITUDINAL SECTION - CHAINAGE 2214.55 TO 2333.66**
HORIZONTAL 1:250
VERTICAL 1:125

* SOUTHERN PIPELINE FLOW + VELOCITY (SHOWN IN BRACKETS)

NORTHERN PIPE IL 17.32
SOUTHERN PIPE IL 17.23
SOUTHERN PIPE GRADE SHOWN
NORTHERN PIPE GRADE 0.510%

1. HYDRAULIC INFORMATION EXTRACTED FROM XP-SWMM MODEL AND IS BASED ON THE 100 YEAR ARI STORM 120 MINUTE DURATION.
2. UTILITY PREFIX ARE EXPLAINED AS FOLLOWS:
EX(DBYD) - EXISTING UTILITY FROM DIAL BEFORE YOU DIG
EX(IPH) - EXISTING UTILITY CONFIRMED BY POTHOLING
PROP - PROPOSED UTILITY
EPSOM - PROPOSED FUTURE UTILITY SHALL BE CONSTRUCTED BY OTHERS
THIS DRAWING SHALL BE READ IN CONJUNCTION WITH GENERAL ARRANGEMENT DRG No. DC0089-100-GA-003.
3. DEPTH TO INVERT LEVEL CALCULATED FROM FUTURE SURFACE LEVEL.
4. FINISHED SURFACE LEVEL SHALL BE CONFIRMED WITH GSTC PRIOR TO CONSTRUCTION.
5. REFER TO STRUCTURE DRAWINGS FOR SET-OUT INFORMATION.
6. PIPE NOT CONCRETE ENCASED SHALL BE PROVIDED WITH THE FOLLOWING MINIMUM BACKFILL:
DN1800 - 12m COVER
DN1950 - 15m COVER
7. EXISTING LOCAL DRAINAGE CONNECTIONS SHOWN ON PLAN ONLY.
8. FOR TRENCH / REINSTATEMENT DETAILS, REFER DRG No. DC0089-100-ST-13 & 072.



CONSTRUCTION ISSUE

				DESIGNED: C.SALEM 13/09/17 DRYING GREEN ALLIANCE		DRAWN: LKO 13/09/17 DRYING GREEN ALLIANCE		VERIFIED: D.KENT 13/09/17 DRYING GREEN ALLIANCE		APPROVED: I.CHASE 13/09/17 DRYING GREEN ALLIANCE		SYDNEY WATER <small>THIS DESIGN IS NOT TO BE COPIED OR AMENDED WITHOUT WRITTEN PERMISSION FROM SYDNEY WATER</small>		ACCEPTED: T.FLEMING 13/09/17 ALLIANCE GENERAL MANAGER DRYING GREEN ALLIANCE		ACCEPTED: P.SHIELDS 13/09/17 CSC PROJECT MANAGER CITY OF SYDNEY PROJECT OWNER		ACCEPTED: M.RILEY 13/09/17 SVC PROJECT MANAGER SYDNEY WATER PROJECT OWNER		GREEN SQUARE STORMWATER PROJECT CITY OF SYDNEY DRAINAGE SHEAS CREEK AMPLIFICATION SWC89AMP SP1 LAYOUT LS - CH.2214.55 TO 2333.66		DRAWING No. DC0089-100 GA-008	
				LETTER		DETAILS OF AMENDMENT		APP'D		DATE				A1		PROJ No. 20028450		DRAWING STATUS: DRAWING DELETED				ISSUE SHEET No. B 4 OF 4	

PLOT DATE: 13/09/17 DWG FILE: DC0089-100-GA-008