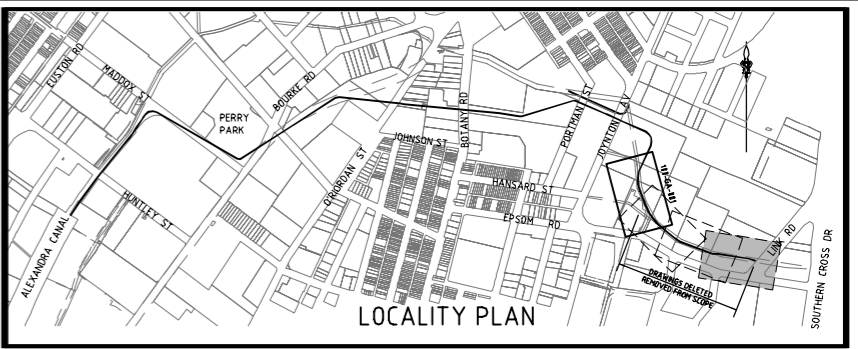


SYDNEY WATER APPROVAL GIVEN FOR PLAN DRAWINGS TO BE PLOTTED IN COLOUR TO DISTINGUISH BETWEEN EXISTING, FUTURE DEVELOPMENTS AND DRYING GREEN ALLIANCE STORMWATER DRAINAGE DESIGN.

CAUTION:
OPTICAL FIBRE AND ELECTRICITY CABLES INCLUDING OVERHEAD POWERLINES IN THE VICINITY, CONTACT THE RELEVANT SERVICE AUTHORITIES FOR THEIR REQUIREMENTS.



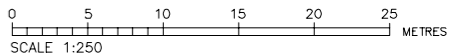
WARNING: Services shown are indicative only. Currency and accuracy are not to be presumed. A current services search, including Dial Before You Dig services plans, and site checking all existing services will be necessary prior to commencing any work. Appropriate procedures, precautions and care to be taken when in close proximity to any service.

- LEGEND:**
- W — EXISTING WATER
 - S — EXISTING SEWER
 - TEL-OP-FIB — EXISTING OPTIC FIBRE CABLES
 - TEL-OP-FIB-IMI — EXISTING MULTIPLE OPTIC FIBRE CABLES
 - E-OH — EXISTING OVERHEAD ELECTRICITY CABLES
 - E-OH-IMI — EXISTING MULTIPLE OVERHEAD ELECTRICITY CABLES
 - E-UG — EXISTING UNDERGROUND ELECTRICITY CABLES
 - E-UG-IMI — EXISTING MULTIPLE UNDERGROUND ELECTRICITY CABLES
 - GHP1 — EXISTING HIGH PRESSURE GAS PIPE
 - GIMP1 — EXISTING MEDIUM PRESSURE GAS PIPE
 - SWD — EXISTING STORMWATER PIPES
 - TEL — EXISTING TELSTRA CABLES
 - TEL-IMI — EXISTING MULTIPLE TELSTRA CABLES
 - E-RHS — EXISTING ROAD AND MARITIME SERVICES
 - — EXISTING RAIL TUNNEL CORRIDOR
 - — EXISTING BUILDING
 - — EXISTING EASEMENT
 - — EXISTING BOUNDARY

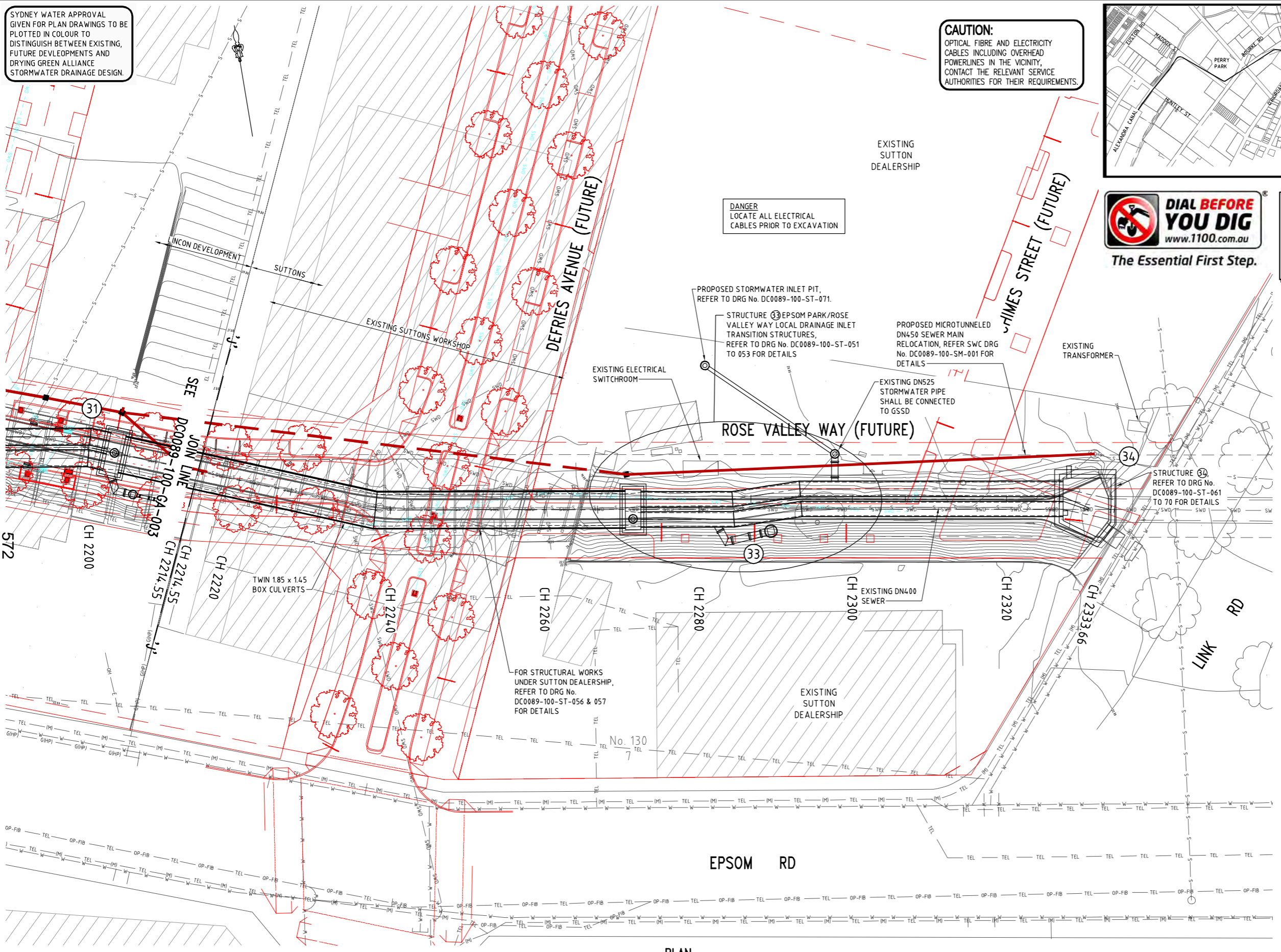
- — FUTURE DEVELOPMENT
- — FUTURE DEVELOPMENT BUILDING
- TEL — FUTURE TELSTRA CABLES (BY OTHERS)
- TEL-OP-FIB — FUTURE OPTIC FIBRE CABLES (BY OTHERS)
- G — FUTURE GAS PIPE (BY OTHERS)
- L-EA — FUTURE ELECTRICAL CABLES (BY OTHERS)
- SWD — FUTURE STORMWATER PIPE (BY OTHERS)
- W — FUTURE WATER (BY OTHERS)
- RW — FUTURE RECYCLED WATER (BY OTHERS)
- S — FUTURE SEWER (BY OTHERS)

- — OD914 WATERMAIN
- ① — GSSD STRUCTURE / NODE NUMBER

- NOTES:**
- SURVEY, DESIGN AND PROPOSED STORMWATER PLANS ARE IN MGA ZONE 56 GRID SYSTEM.
 - ALL DIMENSIONS ARE IN MILLIMETERS UNO. ALL LEVELS AND CHAINAGES ARE EXPRESSED IN METERS - AHD. DRAWINGS NOT TO BE SCALED.
 - FOR LONGITUDINAL SECTIONS, REFER DRG No. DC0089-000-GA-005 TO 010.
 - ALL STRUCTURES SHOWN INDICATIVELY ON PLANS. REFER TO STRUCTURAL DETAILS OF PROPOSED FUTURE CONNECTIONS.
 - PIPE STUBS SHALL BE FITTED WITH REMOVABLE END CAPS. MARKER POST TO BE INSTALLED TO CLEARLY IDENTIFY THE LOCATION OF PIPE STUB ENDS.
 - DEPTH AND SIZE OF ELECTRICAL CONDUITS WITHIN SUTTONS SITE ARE SHALL BE CONFIRMED BY POTHOLING PRIOR TO CONSTRUCTION WORKS.



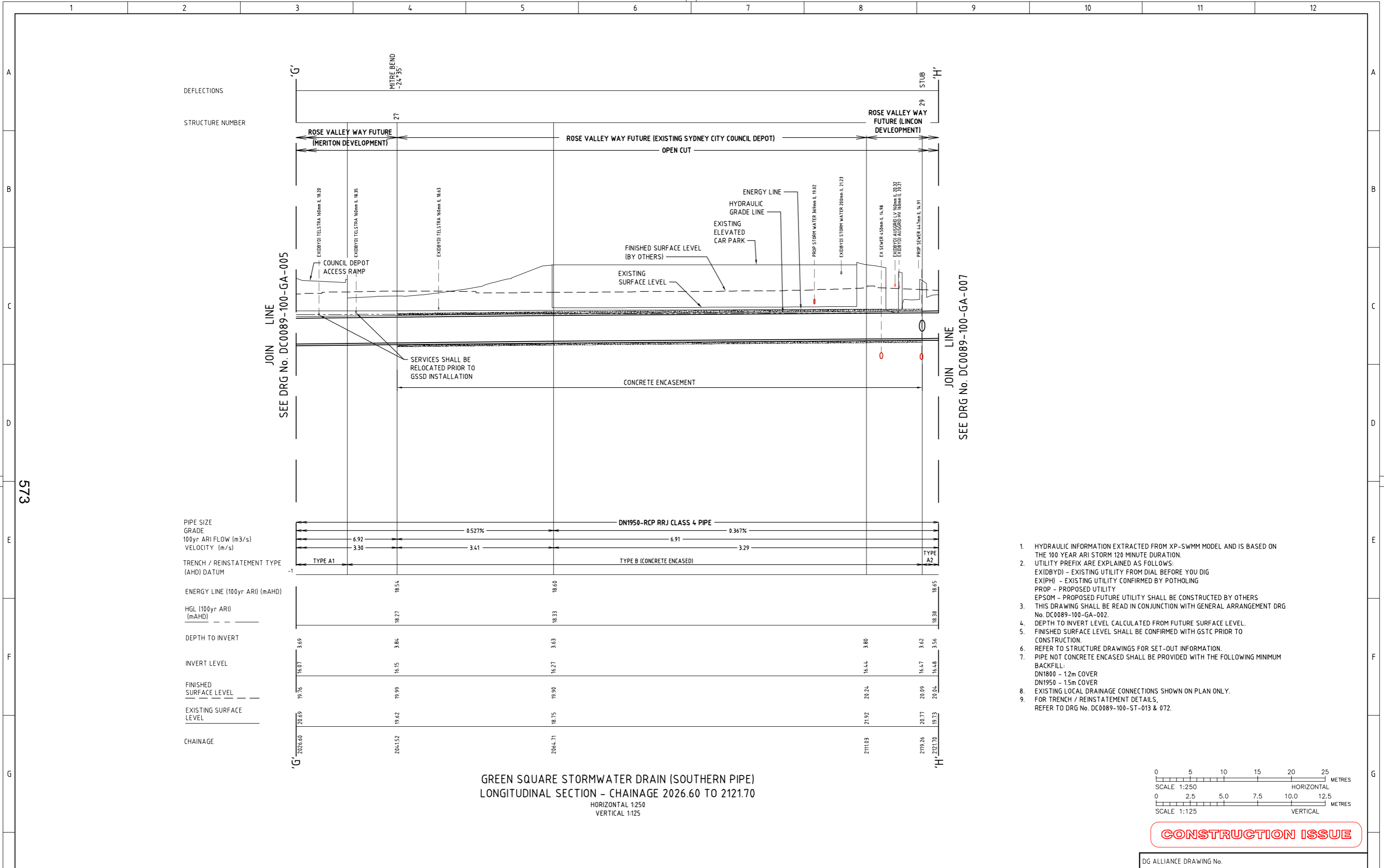
CONSTRUCTION ISSUE



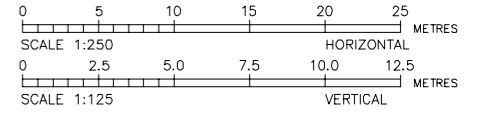
PLAN 1:250

DG ALLIANCE DRAWING No.

		DESIGNED C.SALEM DRYING GREEN ALLIANCE 13/09/17				COPYRIGHT THIS DESIGN IS NOT TO BE COPIED OR AMENDED WITHOUT WRITTEN PERMISSION FROM SYDNEY WATER 	ACCEPTED T.FLEMING ALLIANCE GENERAL MANAGER DRYING GREEN ALLIANCE 13/09/17	GREEN SQUARE STORMWATER PROJECT CITY OF SYDNEY DRAINAGE SHEAS CREEK AMPLIFICATION SWC89AMP SP1 LAYOUT PLAN - CH.2214.55 TO 2333.66	DRAWING No. DC0089-100 GA-004
		DRAWN L.KO DRYING GREEN ALLIANCE 13/09/17	B	DRAWING DELETED - REMOVED FROM SCOPE	LK		13/09/17		ACCEPTED P.SHIELDS CIB PROJECT MANAGER CITY OF SYDNEY PROJECT OWNER 13/09/17
		VERIFIED D.KENT DRYING GREEN ALLIANCE 13/09/17	3	90% DETAILED DESIGN REVIEW FOR SP1	LK	19/02/16	ACCEPTED M.RILEY SWC PROJECT MANAGER SYDNEY WATER PROJECT OWNER 13/09/17	PROJ No. 20028450	DRAWING STATUS: DRAWING DELETED
		APPROVED I.CHASE DRYING GREEN ALLIANCE 13/09/17	2	60% RE-ISSUE FOR DETAILED DESIGN REVIEW FOR SP1	LK	08/12/15			
			1	60% DETAILED DESIGN REVIEW FOR SP1	LK	23/10/15			
			LETTER	DETAILS OF AMENDMENT	APP'D	DATE			



- HYDRAULIC INFORMATION EXTRACTED FROM XP-SWMM MODEL AND IS BASED ON THE 100 YEAR ARI STORM 120 MINUTE DURATION.
- UTILITY PREFIX ARE EXPLAINED AS FOLLOWS:
 EXIDBYD) - EXISTING UTILITY FROM DIAL BEFORE YOU DIG
 EX(IPH) - EXISTING UTILITY CONFIRMED BY POTHOLING
 PROP - PROPOSED UTILITY
 EPSOM - PROPOSED FUTURE UTILITY SHALL BE CONSTRUCTED BY OTHERS
- THIS DRAWING SHALL BE READ IN CONJUNCTION WITH GENERAL ARRANGEMENT DRG No. DC0089-100-GA-002.
- DEPTH TO INVERT LEVEL CALCULATED FROM FUTURE SURFACE LEVEL.
- FINISHED SURFACE LEVEL SHALL BE CONFIRMED WITH GSTC PRIOR TO CONSTRUCTION.
- REFER TO STRUCTURE DRAWINGS FOR SET-OUT INFORMATION.
- PIPE NOT CONCRETE ENCASED SHALL BE PROVIDED WITH THE FOLLOWING MINIMUM BACKFILL:
 DN1800 - 1.2m COVER
 DN1950 - 1.5m COVER
- EXISTING LOCAL DRAINAGE CONNECTIONS SHOWN ON PLAN ONLY.
- FOR TRENCH / REINSTATEMENT DETAILS, REFER TO DRG No. DC0089-100-ST-013 & 072.



CONSTRUCTION ISSUE

GREEN SQUARE STORMWATER DRAIN (SOUTHERN PIPE)
 LONGITUDINAL SECTION - CHAINAGE 2026.60 TO 2121.70
 HORIZONTAL 1:250
 VERTICAL 1:125

		DESIGNED C. SALEM DRYING GREEN ALLIANCE 13/09/17				COPYRIGHT THIS DESIGN IS NOT TO BE COPIED OR AMENDED WITHOUT WRITTEN PERMISSION FROM SYDNEY WATER 	ACCEPTED T. FLEMING ALLIANCE GENERAL MANAGER DRYING GREEN ALLIANCE 13/09/17	GREEN SQUARE STORMWATER PROJECT CITY OF SYDNEY DRAINAGE SHEAS CREEK AMPLIFICATION SWC89AMP SP1 SOUTHERN LS - CH.2026.60 TO 2121.70	DRAWING No. DC0089-100 GA-006
		DRAWN LKO DRYING GREEN ALLIANCE 13/09/17					ACCEPTED P. SHIELDS CIS PROJECT MANAGER CITY OF SYDNEY PROJECT OWNER 13/09/17		ISSUE SHEET No. B 2 OF 4
		VERIFIED D. KENT DRYING GREEN ALLIANCE 13/09/17	B	DRAWING DELETED - REMOVED FROM SCOPE	LK	13/09/17		PROJ No. 20028450	DRAWING STATUS: DRAWING DELETED
		APPROVED I. CHASE DRYING GREEN ALLIANCE 13/09/17	A	ISSUED FOR CONSTRUCTION	LK	01/04/16			
			2	90% DETAILED DESIGN REVIEW FOR SP1	LK	19/02/16			
			1	60% DETAILED DESIGN REVIEW FOR SP1	LK	08/12/15			
			LETTER	DETAILS OF AMENDMENT	APP'D	DATE			