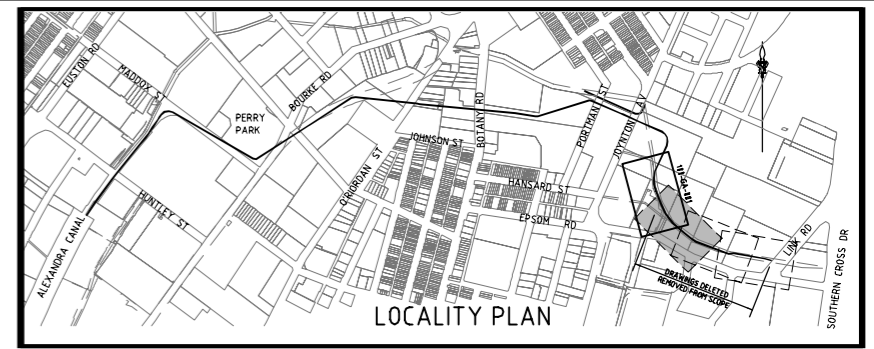


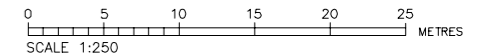
SYDNEY WATER APPROVAL GIVEN FOR PLAN DRAWINGS TO BE PLOTTED IN COLOUR TO DISTINGUISH BETWEEN EXISTING, FUTURE DEVELOPMENTS AND DRYING GREEN ALLIANCE STORMWATER DRAINAGE DESIGN



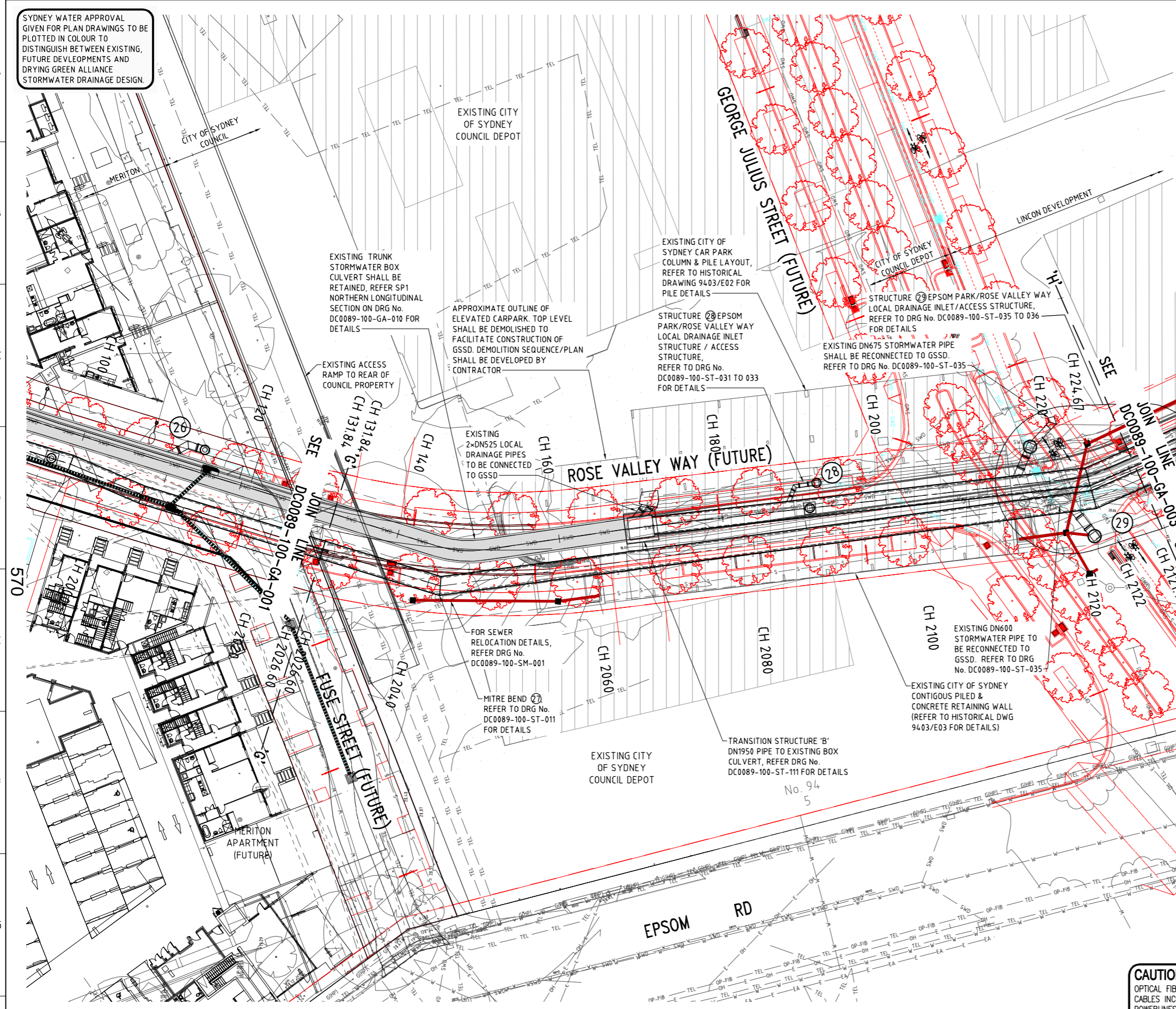
WARNING: Services shown are indicative only. **Currency and accuracy are not to be presumed.** A current services search, including Dial Before You Dig services plans, and site checking all existing services will be necessary prior to commencing any work. Appropriate procedures, precautions and care to be taken when in close proximity to any service.

- LEGEND:**
- W — EXISTING WATER
 - S — EXISTING SEWER
 - TEL-OP-FIB — EXISTING OPTIC FIBRE CABLES
 - TEL-OP-FIB-IMI — EXISTING MULTIPLE OPTIC FIBRE CABLES
 - E-OH — EXISTING OVERHEAD ELECTRICITY CABLES
 - E-OH-IMI — EXISTING MULTIPLE OVERHEAD ELECTRICITY CABLES
 - E-UG — EXISTING UNDERGROUND ELECTRICITY CABLES
 - E-UG-IMI — EXISTING MULTIPLE UNDERGROUND ELECTRICITY CABLES
 - GHP — EXISTING HIGH PRESSURE GAS PIPE
 - GMP — EXISTING MEDIUM PRESSURE GAS PIPE
 - SWD — EXISTING STORMWATER PIPES
 - TEL — EXISTING TELSTRA CABLES
 - TEL-IMI — EXISTING MULTIPLE TELSTRA CABLES
 - E-RMS — EXISTING ROAD AND MARITIME SERVICES
 - — EXISTING RAIL TUNNEL CORRIDOR
 - — EXISTING BUILDING
 - — EXISTING EASEMENT
 - — EXISTING BOUNDARY
 - — FUTURE DEVELOPMENT
 - TEL — FUTURE TELSTRA CABLES (BY OTHERS)
 - TEL-OP-FIB — FUTURE OPTIC FIBRE CABLES (BY OTHERS)
 - G — FUTURE GAS PIPE (BY OTHERS)
 - E-EA — FUTURE ELECTRICAL CABLES (BY OTHERS)
 - SWD — FUTURE STORMWATER PIPE (BY OTHERS)
 - W — FUTURE WATER (BY OTHERS)
 - RW — FUTURE RECYCLED WATER (BY OTHERS)
 - S — FUTURE SEWER (BY OTHERS)
 - — OD914 WATERMAIN
 - (1) — GSSD STRUCTURE / NODE NUMBER

- NOTES:**
- SURVEY, DESIGN AND PROPOSED STORMWATER PLANS ARE IN MGA ZONE 56 GRID SYSTEM.
 - ALL DIMENSIONS ARE IN MILLIMETERS UNO. ALL LEVELS AND CHAINAGES ARE EXPRESSED IN METERS - AHD. DRAWINGS NOT TO BE SCALED.
 - FOR LONGITUDINAL SECTIONS, REFER DRG No. DC0089-000-GA-005 TO 010.
 - ALL STRUCTURES SHOWN INDICATIVELY ON PLANS. REFER TO STRUCTURAL DETAILS OF PROPOSED PIPES CONNECTIONS.
 - PIPE STUBS TO BE FITTED WITH REMOVABLE END CAPS. MARKER POST SHALL BE INSTALLED TO CLEARLY IDENTIFY THE LOCATION OF PIPE STUB ENDS.
 - PIPE RADIUS TO BE ACHIEVED THROUGH DEFLECTION AT RUBBER RING PIPE JOINTS, IN ACCORDANCE WITH MANUFACTURERS RECOMMENDATIONS.



CONSTRUCTION ISSUE



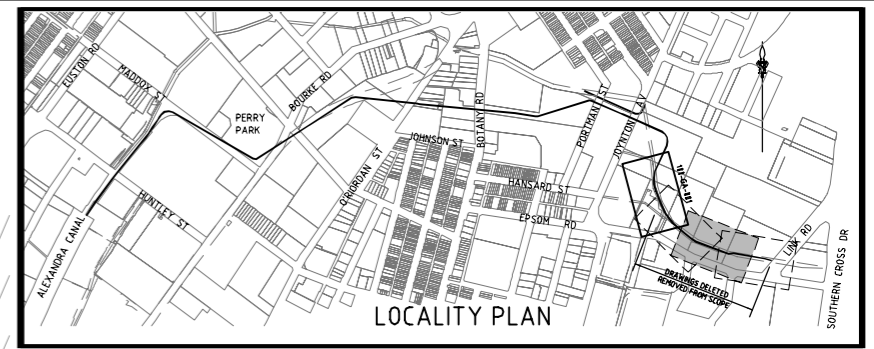
PLAN 1:250

CAUTION: OPTICAL FIBRE AND ELECTRICITY CABLES INCLUDING OVERHEAD POWERLINES IN THE VICINITY, CONTACT THE RELEVANT SERVICE AUTHORITIES FOR THEIR REQUIREMENTS.

		DESIGNED C.SALEM 13/09/17 DRYING GREEN ALLIANCE				COPYRIGHT THIS DESIGN IS NOT TO BE COPIED OR AMENDED WITHOUT WRITTEN PERMISSION FROM SYDNEY WATER 	ACCEPTED T.FLEMING 13/09/17 ALLIANCE GENERAL MANAGER DRYING GREEN ALLIANCE	GREEN SQUARE STORMWATER PROJECT CITY OF SYDNEY DRAINAGE SHEAS CREEK AMPLIFICATION SWC89AMP SP1 LAYOUT PLAN - CH.2026.60 TO 2121.70	DRAWING No. DC0089-100 GA-002
		DRAWN L.KO 13/09/17 DRYING GREEN ALLIANCE	B DRAWING DELETED - REMOVED FROM SCOPE	LK 13/09/17	ACCEPTED P.SHIELDS 13/09/17 CIB PROJECT MANAGER CITY OF SYDNEY PROJECT OWNER		ISSUE SHEET No. B 2 OF 4		
		VERIFIED D.KENT 13/09/17 DRYING GREEN ALLIANCE	A ISSUED FOR CONSTRUCTION	LK 01/24/16			ACCEPTED M.RILEY 13/09/17 SWE PROJECT MANAGER SYDNEY WATER PROJECT OWNER	PROJ No. 20028450	DRAWING STATUS: DRAWING DELETED
		APPROVED I.CHASE 13/09/17 DRYING GREEN ALLIANCE	3 90% DETAILED DESIGN REVIEW FOR SP1	LK 19/02/16					
			2 60% RE-ISSUE FOR DETAILED DESIGN REVIEW FOR SP1	LK 08/12/15					
			1 60% DETAILED DESIGN REVIEW FOR SP1	LK 23/10/15					
			LETTER DETAILS OF AMENDMENT	APP'D DATE					

SYDNEY WATER APPROVAL GIVEN FOR PLAN DRAWINGS TO BE PLOTTED IN COLOUR TO DISTINGUISH BETWEEN EXISTING, FUTURE DEVELOPMENTS AND DRYING GREEN ALLIANCE STORMWATER DRAINAGE DESIGN.

CAUTION:
OPTICAL FIBRE AND ELECTRICITY CABLES INCLUDING OVERHEAD POWERLINES IN THE VICINITY, CONTACT THE RELEVANT SERVICE AUTHORITIES FOR THEIR REQUIREMENTS.

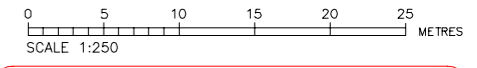


WARNING: Services shown are indicative only. **Currency and accuracy are not to be presumed.** A current services search, including Dial Before You Dig services plans, and site checking all existing services will be necessary prior to commencing any work. Appropriate procedures, precautions and care to be taken when in close proximity to any service.

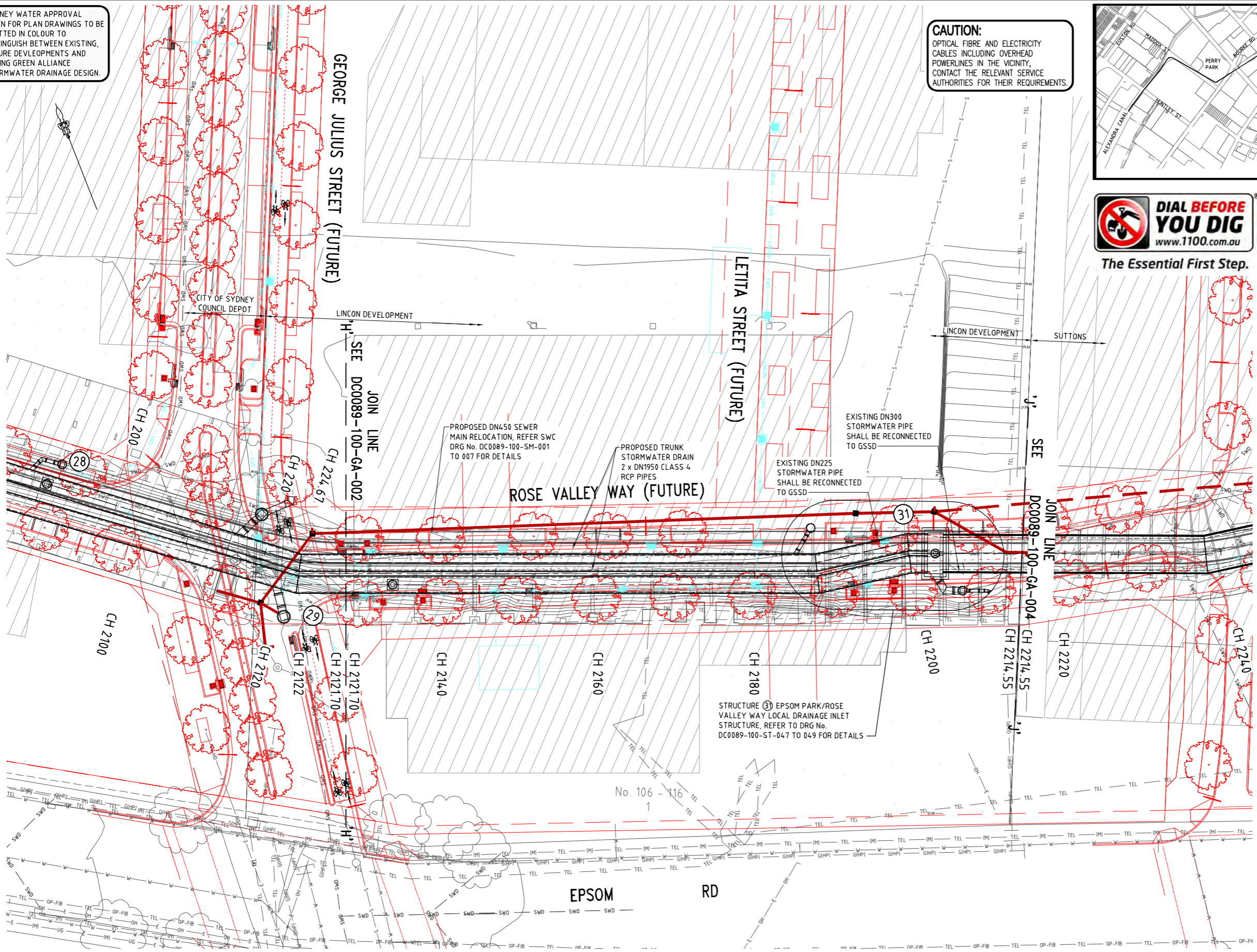
- LEGEND:**
- W — EXISTING WATER
 - S — EXISTING SEWER
 - TEL — OP — FIB — EXISTING OPTIC FIBRE CABLES
 - TEL — OP — FIB — (MI) — EXISTING MULTIPLE OPTIC FIBRE CABLES
 - E — OH — EXISTING OVERHEAD ELECTRICITY CABLES
 - E — OH — (MI) — EXISTING MULTIPLE OVERHEAD ELECTRICITY CABLES
 - E — UG — EXISTING UNDERGROUND ELECTRICITY CABLES
 - E — UG — (MI) — EXISTING MULTIPLE UNDERGROUND ELECTRICITY CABLES
 - GHP1 — EXISTING HIGH PRESSURE GAS PIPE
 - GMP1 — EXISTING MEDIUM PRESSURE GAS PIPE
 - SWD — EXISTING STORMWATER PIPES
 - TEL — EXISTING TELSTRA CABLES
 - TEL — (MI) — EXISTING MULTIPLE TELSTRA CABLES
 - E — RMS — EXISTING ROAD AND MARITIME SERVICES
 - EXISTING RAIL TUNNEL CORRIDOR
 - EXISTING BUILDING
 - EXISTING EASEMENT
 - EXISTING BOUNDARY

- FUTURE DEVELOPMENT
 - TEL — FUTURE TELSTRA CABLES (BY OTHERS)
 - TEL — OP — FIB — FUTURE OPTIC FIBRE CABLES (BY OTHERS)
 - G — FUTURE GAS PIPE (BY OTHERS)
 - E — EA — FUTURE ELECTRICAL CABLES (BY OTHERS)
 - SWD — FUTURE STORMWATER PIPE (BY OTHERS)
 - W — FUTURE WATER (BY OTHERS)
 - RW — FUTURE RECYCLED WATER (BY OTHERS)
 - S — FUTURE SEWER (BY OTHERS)
- OD914 WATERMAIN
- ① GSSD STRUCTURE / NODE NUMBER

- NOTES:**
1. SURVEY, DESIGN AND PROPOSED STORMWATER PLANS ARE IN MGA ZONE 56 GRID SYSTEM.
 2. ALL DIMENSIONS ARE IN MILLIMETERS UNO. ALL LEVELS AND CHAINAGES ARE EXPRESSED IN METERS - AHD.
 3. DRAWINGS NOT TO BE SCALED.
 4. FOR LONGITUDINAL SECTIONS, REFER DRG No. DC0089-000-GA-005 TO 010.
 5. ALL STRUCTURES SHOWN INDICATIVELY ON PLANS. REFER TO STRUCTURAL DETAILS OF PROPOSED FUTURE CONNECTIONS.
 6. PIPE STUBS SHALL BE FITTED WITH REMOVABLE END CAPS. MARKER POST SHALL BE INSTALLED TO CLEARLY IDENTIFY THE LOCATION OF PIPE STUB ENDS.



CONSTRUCTION ISSUE



PLAN 1:250

		DESIGNED C. SALEM 13/09/17 DRYING GREEN ALLIANCE				COPYRIGHT THIS DESIGN IS NOT TO BE COPIED OR AMENDED WITHOUT WRITTEN PERMISSION FROM SYDNEY WATER 	ACCEPTED T. FLEMING 13/09/17 ALLIANCE GENERAL MANAGER DRYING GREEN ALLIANCE	GREEN SQUARE STORMWATER PROJECT CITY OF SYDNEY DRAINAGE SHEAS CREEK AMPLIFICATION SWC89AMP SP1 LAYOUT PLAN - CH.2121.70 TO 2214.55 PROJ No. 20028450 DRAWING STATUS: DRAWING DELETED	DRAWING No. DC0089-100 GA-003
		DRAWN L.KO 13/09/17 DRYING GREEN ALLIANCE	B DRAWING DELETED - REMOVED FROM SCOPE	LK 13/09/17			ACCEPTED P. SHIELDS 13/09/17 CDS PROJECT MANAGER CITY OF SYDNEY PROJECT OWNER		ISSUE SHEET No. B 3 OF 4
		VERIFIED D. KENT 13/09/17 DRYING GREEN ALLIANCE	3 90% DETAILED DESIGN REVIEW FOR SP1	LK 19/02/16					
		APPROVED I. CHASE 13/09/17 DRYING GREEN ALLIANCE	1 60% DETAILED DESIGN REVIEW FOR SP1	LK 23/10/15					
			LETTER DETAILS OF AMENDMENT	APP'D DATE					