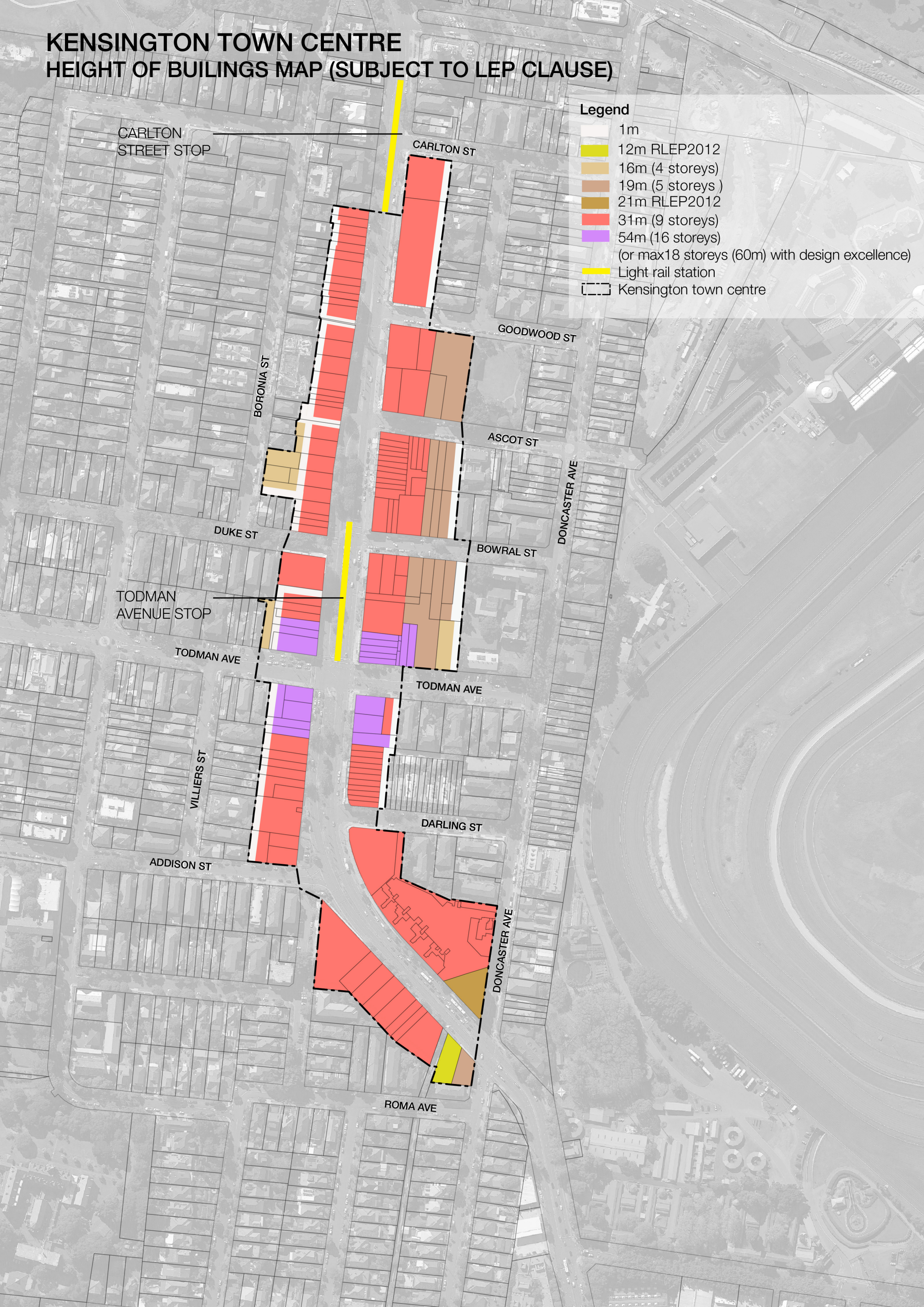


# KENSINGTON TOWN CENTRE HEIGHT OF BUILDINGS MAP (SUBJECT TO LEP CLAUSE)

## Legend

- 1m
- 12m RLEP2012
- 16m (4 storeys)
- 19m (5 storeys)
- 21m RLEP2012
- 31m (9 storeys)
- 54m (16 storeys)  
(or max 18 storeys (60m) with design excellence)
- Light rail station
- Kensington town centre





# KINGSFORD TOWN CENTRE HEIGHT OF BUILDINGS MAP (SUBJECT TO LEP CLAUSE)

UNSW ANZAC  
PARADE STOP

## Legend

- 1m
- 16m (4 storeys)
- 19m (5 storeys)
- 24m RLEP2012
- 25m (7 storeys)
- 31m (9 storeys)
- 51m (15 storeys)  
(or max 17 storeys (57m) with design excellence)
- 54m (16 storeys)  
(or max 18 storeys (60m) with design excellence)
- Light rail station
- Kensington town centre

